

Tratament chimic: CONSUM RIDICAT, INCALZIRE DEFICITARA CAZANE PE LEMNE

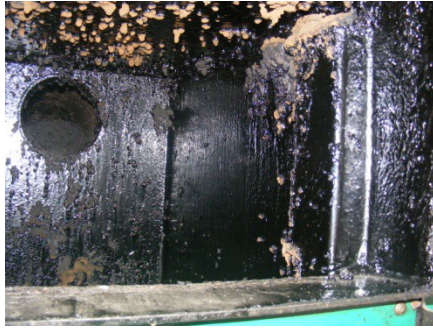


CHIMIA
INSTALATIEI
TERMICE

Probleme tratate: GUDRON

Materiale: OTEL / FONTA

Varianta 1 – depuneri moderate



GUDRONEX



Pregatiti focul in
in cazan

Introduceti 1 doza (<30kW)
Introduceti 2 doze (30-50kW)



**Nu depasiti numarul de doze
recomandate pentru o curatare!**



GUDRONEX



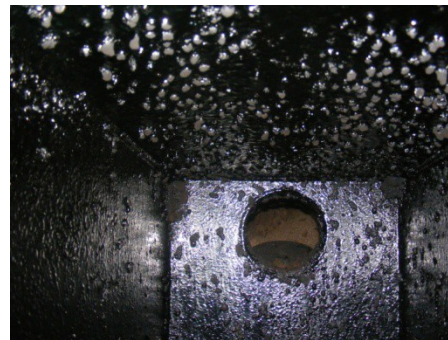
Pentru intretinere, curatati
la fiecare 2 saptamani
(cca 8 doze / sezon rece)

Varianta 2 – depuneri masive

CLEANEX GUDRON



Pulverizati pe toata
suprafata cu depuneri
(lasati sa actioneze 30-
60min)



Pregatiti focul in
in cazan

GUDRONEX PLUS



Introduceti 1 doza (<30kW)
Introduceti 2 doze (30-50kW)



Inlaturati depunerile
usor cu peria